

Mediatomb AddOn for napp-it ZFS Server Appliance

Published: 2013-02-20 © Christopher Schinzel

I am not a native english speaker but will do my best. If you have any suggestions, technical or syntax errors please contact me at the following forums:

<http://forums.servethehome.com>

<http://hardforum.com>

<http://www.hardwareluxx.de>

chris

_chris

1chris

Content

- 1 Introduction
- 2 Installation
- 3 Configuration

1 - Introduction

Mediatomb is an open source (GPL) UPnP mediaserver, which allows you to stream your digital media through your network and listen to/watch it on a variety of UPnP compatible devices. It implements the UPnP mediaserver v 1.0 specification.

For more information look at: <http://www.mediatomb.cc>

Napp-it is a web-management (gui) interface for a ZFS server based on Illumian, NexentaCore, OpenIndiana or Solaris 11, which supports features like system and network management, easy snapshot management, smb-server with windows acl, nfs server, iscsi server and many more.

For more information look at: <http://www.napp-it.org>

To get an UPnP compatible mediaserver which can be managed via napp-it web interface you need Mediatomb AddOn for napp-it. Your media files are stored on a ZFS filesystem and can be streamed with the high performance and reliability of it. It is fully integrated in napp-it web-management interface. So you can configure it very easily.

2 - Installation

Installation and configuration of Mediatomb AddOn for napp-it is provided by an installation script, which is downloadable from napp-it.org.

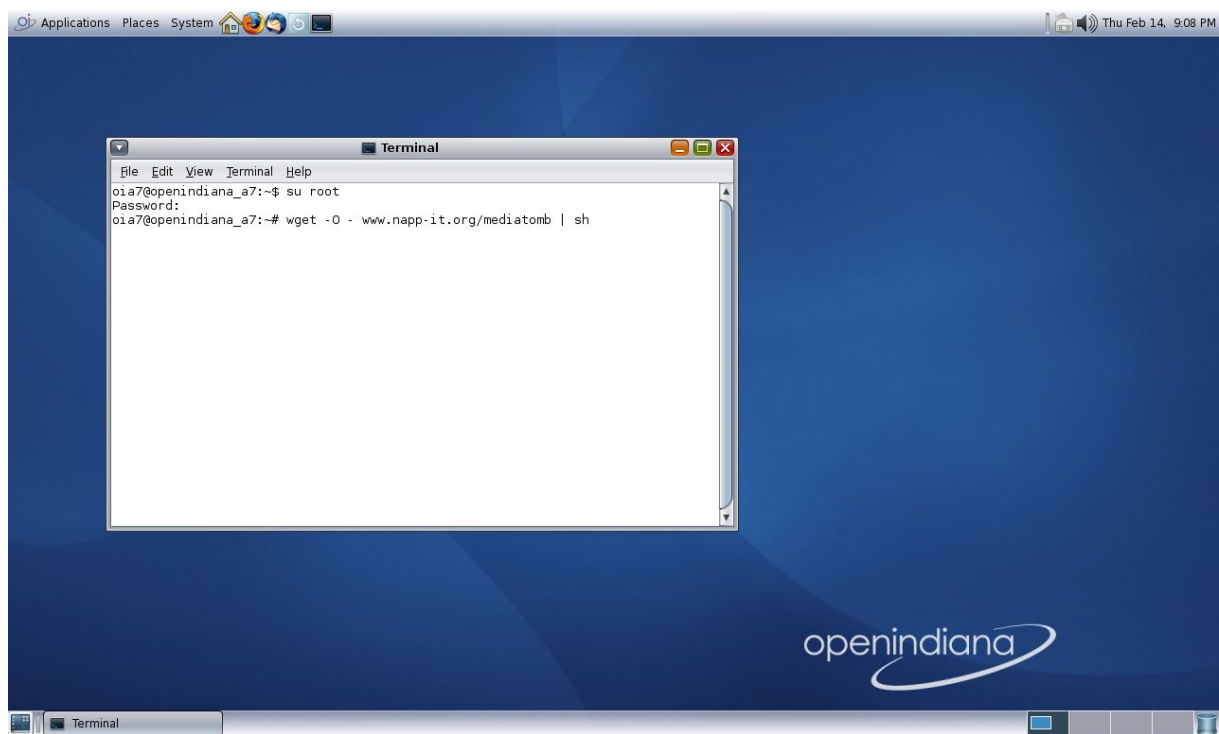
The script supports OmniOS and OpenIndiana. Support for other OS will be added in the future.

- open a terminal as root or use ssh to connect to your server as root
- make sure that you are in home directory:

```
cd $HOME
```

- run the install and configuration script with the following command:

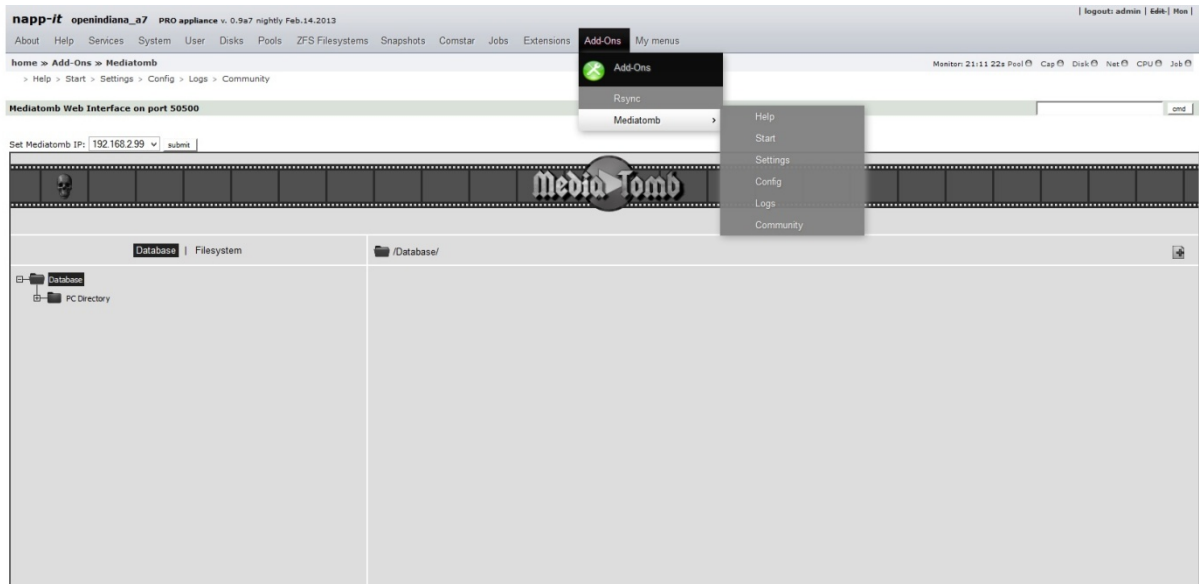
```
wget -O - www.napp-it.org/mediatomb | sh
```



Installation command in terminal

3 - Configuration

After the AddOn was installed successfully you can configure your mediaserver via napp-it web intrface under Add-Ons -> Mediatomb (minimum napp-it 0.9a7 nightly Feb.18.2013 needed).



Mediatomb AddOn menu in napp-it

It is necessary to bind the server on an IP address of your machine. You can do this by selecting the main point Mediatomb under Add-Ons and choose the suitable value out of the drop down list. If everything worked fine you will see the Mediatomb web interface on this page. You can add your media files on the webinterface by selecting the suitable files and folders out of your filesystem (e.g. ZFS-Pool). Click the plus-symbol at the right corner to add media to the database. You can choose, if autoscan will be enabled or not.

Thats it! Youre Mediatomb is now running.

For configuration purposes there are additional menu entries unter Add-Ons -> Mediatomb in napp-it:

Help:	Displays Mediatomb website (www.mediastomb.cc).
Start:	Start / Stop Mediatomb service on your server.
Settings:	Quick and easy settings for mediaserver configuration.
Config:	Edit the main configuration file of Mediatomb.
Logs:	View the log file of Mediatomb for debugging purposes.
Community:	Reference on support threads in different forums to solve problems and discuss about features and capabilities of the AddOn.

Mediatomb is capable to provide media streaming for many DLNA-enabled devices like TVs, AV-Receivers, PCs or Multimedia-Players. Some devices can only playback media, if you edit the main configuration file of mediastomb. The next passage describes the quick and easy settings, which allows you to do some basic configuration to increase the support of your devices for Mediatomb:

UPnP Mediaserver-Name:	Display name of your media server, which appears on your devices.
YouTube support:	Enable/Disable support for YouTube. This feature allows you to watch YouTube videos on your UpnP devices! Please check http://www.youtube.com/t/terms . By using this feature you may be violating YouTube service terms and conditions!
http headers for DLNA:	Adding custom headers to the media stream, which are required by some devices like Samsung TV.
DLNA support:	Enables DLNA-Support, which is needed by the most devices.
Virtual Layout Type:	builtin – Media will be sorted with the default import script. js – Media will be sorted with a custom import script. disabled – Media is browseable by folder structure of your filesystem.
Mediatomb Web-UI:	Enables/Disables Mediaserver Web-Interface on port 50500.
Require Login:	Enable/Disable login page on the mediastomb Web-Interface.
User (single admin):	Username for login (only one possible).
Password:	Password for login (appears in the config file as plain text)
Delete database:	Deleting the database of Mediatomb. You have to add all media files again.
Use napp-it base config:	Reset of all manual adjustments in the main config file.

To support all media formats, which can be handled by your device it can be necessary to edit the passage < mappings > of the Mediatomb config file. You can edit the media mappings or add new entries. The example below adds some new formats (e.g. m4a, iso) and makes some video formats playable for Samsung TVs (last entries):

home » Add-Ons » Mediatomb » Config

> Help > Start > Settings > Config > Logs > Community

edit config.xml

Be carefull about config and restart service after modifications. Use menu Settings for basic settings!

file: config.xml

```
<import-script>/opt/local/share/mediatomb/js/import.js</import-script>
</virtual-layout>
</scripting>
<mappings>
  <extension-mimetype ignore-unknown="no">
    <map from="mp3" to="audio/mpeg"/>
    <map from="m4a" to="audio/mpeg"/>
    <map from="ogx" to="application/ogg"/>
    <map from="ogv" to="video/ogg"/>
    <map from="oga" to="audio/ogg"/>
    <map from="ogg" to="audio/ogg"/>
    <map from="ogm" to="video/ogg"/>
    <map from="asf" to="video/x-ms-asf"/>
    <map from="asx" to="video/x-ms-asf"/>
    <map from="wma" to="audio/x-ms-wma"/>
    <map from="wax" to="audio/x-ms-wax"/>
    <map from="wmv" to="video/x-ms-wmv"/>
    <map from="wvx" to="video/x-ms-wvx"/>
    <map from="wm" to="video/x-ms-wm"/>
    <map from="wmx" to="video/x-ms-wmx"/>
    <map from="m3u" to="audio/x-mpegurl"/>
    <map from="pls" to="audio/x-scpls"/>
    <map from="flv" to="video/x-flv"/>
    <map from="mka" to="audio/x-matroska"/>
    <map from="mp2t" to="video/mpeg"/>
    <map from="ts" to="video/mpeg"/>
    <map from="mpg" to="video/mpeg"/>
    <map from="avi" to="video/mpeg"/>
    <map from="mkv" to="video/mpeg"/>
    <map from="iso" to="video/mpeg"/>
  </extension-mimetype>
</mappings>
```

Section mappings of the main config file

If you have a device running which requires other adjustments in the main config file please share your experience for improving the compatiility of the AddOn.

On Problems with the Mediatomb AddOn for napp-it you can use the information provided in the sub menu Community to get liks to my threads. You can also discuss improvements there.